



CHEROKEE<sup>®</sup>  
— MEDICAL —  
UNIFORMS

## A New Kind of Clean

Cherokee fabric just loves to get fresh. New and improved European Wash Standards mean you can turn up the temp on laundry day and feel extra-polished in your favorite pieces.





## The world's #1 medical apparel brand

Cherokee is the brand where it all began. A bold new concept at the time, fashion scrubs that “fit who you are” sparked a revolution many have tried to imitate.

Cherokee Uniforms grew rapidly to become the world's biggest and most popular medical apparel brand, expanding into multiple fabrications and sub-brands. They include Infinity, Workwear Originals, Workwear Revolution, Workwear Revolution Tech, Workwear Core Stretch and Project Lab

Cherokee Uniforms remains our flagship brand, offering unsurpassed selection, quality, innovation, and value.

Front cover: Left Model is wearing Round Neck Top **CKE2624A** in Pewter (PWPS).

Front cover: Right Model is wearing Mock Wrap Top **CKE2625A** in Royal (RYPS).

Right Image: Model is wearing V-neck Top **WWE620** in Ciel (CIE).





## **CONTENTS**

- 05** WORKWEAR ORIGINALS
- 09** WORKWEAR REVOLUTION
- 15** WORKWEAR REVOLUTION TECH
- 17** WORKWEAR CORE STRETCH
- 22** INFINITY
- 26** PROJECT LAB
- 28** WORKWEAR
- 29** FIT GUIDES / SIZE CHARTS
- 31** STYLE INDEX
- 32** COLOUR ABBREVIATIONS
- 33** ORDERING & RETURN POLICY





## Classics You Can Count On

Our original scrubs are still as popular as ever. They're strong, stylish, and as dependable as you are.



DURABLE



SOIL RELEASE

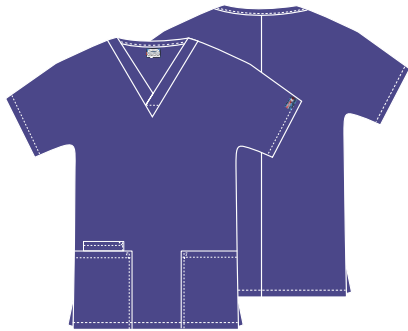


EASY CARE



Model is wearing **WWE4700**  
V-Neck Top in Royal (ROYW).





### WWE4700 V-Neck Top

**XXS-3XL (67cm)**

**Fabric**  
65 Poly/35 Cotton  
Poplin w/Soil Release  
White: 55 Cotton/  
45 Poly Poplin

**Fabric Weight**  
153gr / 170gr

**Care**  
Industrial Launder



#### Product Details

- Traditional Classic fit
- Two patch pockets
- Cellphone pocket
- Short dolman sleeves
- Side vents

#### Available Colours



### WWE4770 Snap Front V-Neck Top

**XXS-3XL (67cm)**

**Fabric**  
65 Poly/35 Cotton  
Poplin w/Soil Release  
White: 55 Cotton/  
45 Poly Poplin

**Fabric Weight**  
153gr / 170gr

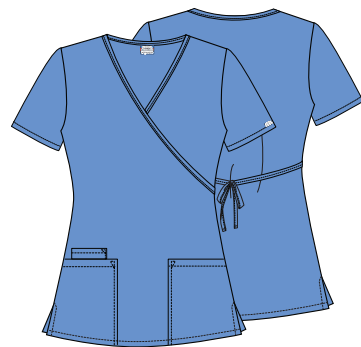
**Care**  
Industrial Launder



#### Product Details

- Traditional Classic fit
- Snap front closure
- Two patch pockets
- Cellphone pocket
- Side vents

#### Available Colours



### WWE4801 Mock Wrap Tunic

**XXS-3XL (72cm)**

**Fabric**  
65 Poly/35 Cotton  
Poplin w/Soil Release

**Fabric Weight**  
153gr / 170gr

**Care**  
Industrial Launder



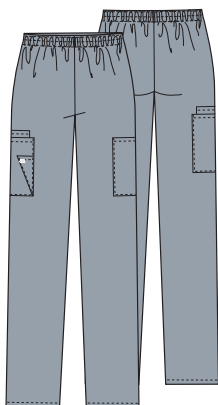
#### Product Details

- Traditional Classic fit
- Two patch pockets
- Cellphone pocket
- Tie-back detail
- Side vents

#### Available Colours



## WOMEN'S TROUSERS



### WWE4200 Natural Rise Pull-on Cargo Trouser

**XXS-3XL (76cm)**

**Fabric**  
65 Poly/35 Cotton  
Poplin w/Soil Release  
White: 55 Cotton/  
45 Poly Poplin

**Fabric Weight**  
153gr / 170gr

**Care**  
Industrial Launder



#### Product Details

- Traditional Classic fit
- Elastic waistband
- Two cargo pockets
- Cellphone pocket
- Scissors pocket
- Tapered leg, 38cm opening

#### Available Colours





## UNISEX STYLES


**WWE4876**  
**Unisex V-Neck Top**
**XXS-3XL (73.5cm)**
**Fabric**

 65 Poly/35 Cotton  
 Poplin w/Soil Release  
 White: 55 Cotton/  
 45 Poly Poplin

**Fabric Weight**

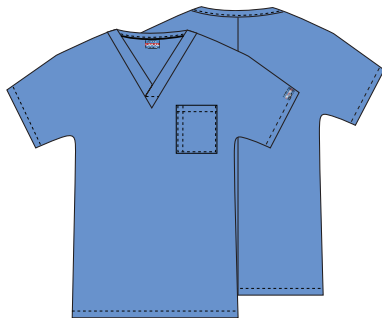
153gr / 170gr

**Care**

Industrial Launder


**Product Details**

- Unisex fit
- Chest pocket
- Two patch pockets
- Side vents

**Available Colours**

**WWE4777**  
**Unisex V-Neck Tunic**
**XXS-3XL (69.5cm)**
**Fabric**

 65 Poly/35 Cotton  
 Poplin w/Soil Release

**Fabric Weight**

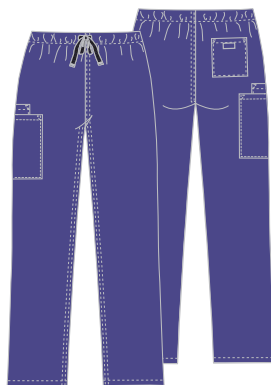
153gr / 170gr

**Care**

Industrial Launder


**Product Details**

- Unisex fit
- Chest pocket with pen slot
- Dolman sleeves

**Available Colours**

**WWE4100**  
**Unisex Drawstring Cargo Trouser**
**XXS-3XL (78.5cm)**
**Fabric**

 65 Poly/35 Cotton  
 Poplin w/Soil Release  
 White: 55 Cotton/  
 45 Poly Poplin

**Fabric Weight**

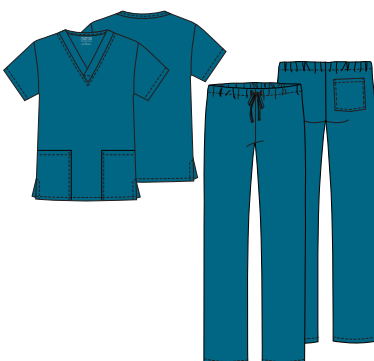
153gr / 170gr

**Care**

Industrial Launder


**Product Details**

- Unisex fit
- Webbed drawstring
- Cargo pocket with inside cellphone pocket
- Back pocket
- Straight leg, 47cm opening

**Available Colours**

**WWE530C**  
**Unisex Top and Trouser Set**
**XXS-3XL**  
 (Center back  
 length: 72cm  
 Inseam: 78.5cm)

**Fabric**

 65 Poly/35 Cotton  
 Poplin w/Soil Release  
 White: 55 Cotton/  
 45 Poly Poplin

**Fabric Weight**

153gr / 170gr

**Care**

Industrial Launder


**Product Details**

- Unisex fit
- Three pockets: patch pockets, back pocket
- Drawstring waist
- Tapered leg, 45.5cm opening

**Available Colours**

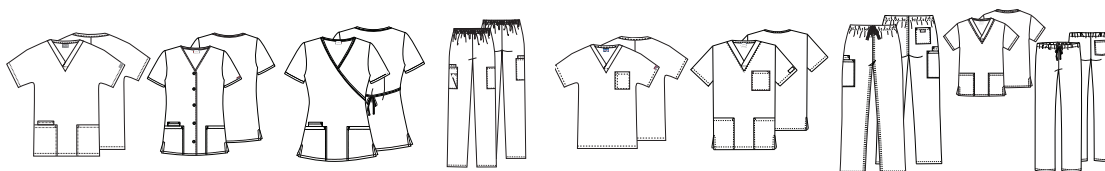



## COLOUR and STYLE MATRIX

Colours and styles listed in order of popularity.

Styles and colours featured are reorderable, and are Poly/Cotton Poplin w/Soil Release (White: Cotton/Poly Poplin).

Centre back lengths and inseams are listed in parentheses.



WWE4700	WWE4770	WWE4801	WWE4200	WWE4777	WWE4876	WWE4100	WWE530C
V-Neck Top	Snap Front V-Neck Top	Mock Wrap Tunic	Natural Rise Pull-on Cargo Trouser	V-Neck Tunic	V-Neck Top	Drawstring Cargo Trouser	Top and Trouser Set
XXS-3XL (67cm)	XXS-3XL (67cm)	XXS-3XL (72cm)	XXS-3XL (76cm)	XXS-3XL (69.5cm)	XXS-3XL (73.5cm)	XXS-3XL (78.5cm)	XXS-3XL (CBL: 72cm Inseam: 78.5cm)

	WOMEN'S STYLES				UNISEX STYLES			
Black (BLKW)								
Navy (NAVW)								
Pewter (PWTW)								
Royal (ROYW)		style not available in this colour						
Wine (WINW)		style not available in this colour	style not available in this colour					
Ciel (CIEW)		style not available in this colour						
White (WHTW)			style not available in this colour		style not available in this colour			
Caribbean Blue (CARW)		style not available in this colour	style not available in this colour		style not available in this colour			
Teal Blue (TLBW)		style not available in this colour	style not available in this colour		style not available in this colour			style not available in this colour
Hunter (HUNW)		style not available in this colour			style not available in this colour			
Galaxy Blue (GABW)		style not available in this colour	style not available in this colour		style not available in this colour	style not available in this colour	style not available in this colour	style not available in this colour
Red (REDW)		style not available in this colour	style not available in this colour		style not available in this colour	style not available in this colour	style not available in this colour	style not available in this colour
Grey (GRYW)		style not available in this colour	style not available in this colour		style not available in this colour	style not available in this colour		style not available in this colour
Eggplant (EGGW)		style not available in this colour	style not available in this colour		style not available in this colour	style not available in this colour		style not available in this colour
Grape (GRPW)		style not available in this colour	style not available in this colour		style not available in this colour	style not available in this colour		style not available in this colour
Khaki (KAKW)		style not available in this colour	style not available in this colour		style not available in this colour	style not available in this colour	style not available in this colour	style not available in this colour
Turquoise (TRQW)		style not available in this colour	style not available in this colour		style not available in this colour	style not available in this colour	style not available in this colour	style not available in this colour
Shocking Pink (SHPW)		style not available in this colour	style not available in this colour		style not available in this colour	style not available in this colour	style not available in this colour	style not available in this colour
Surgical Green (SGRW)		style not available in this colour	style not available in this colour		style not available in this colour	style not available in this colour	style not available in this colour	style not available in this colour



ACTIVE STYLING

# Work Hard, Look Smart

This mini-collection combines a professional look with high-performance features like contrast mesh panels, which add breathability and ease of movement, so they look and feel great all shift long.



ULTRA  
SOFT



TWO-WAY  
STRETCH



EASY  
CARE



Model is wearing  
**WW615** Men's Polo  
Shirt in Pewter (PWT).

WOMEN'S ACTIVE STYLES



WWE601

V-Neck Top

XXS-3XL (66cm)

**Fabric**  
78 Poly/20 Rayon/  
2 Elastane Twill

**Fabric Weight**  
160gr

**Care**  
30°

- Product Details**
- Modern Classic fit
  - Two patch pockets
  - Instrument loops in right pocket
  - Mesh neckband and panels
  - Front and back shoulder yokes
  - Front vents
  - Shirttail hem
  - Reflective label and tape

Available Colours

BLK

NAV

PWT



WWE698

Snap Front Polo Shirt

XXS-3XL (70cm)

**Fabric**  
78 Poly/20 Rayon/  
2 Elastane Twill

**Fabric Weight**  
160gr

**Care**  
30°

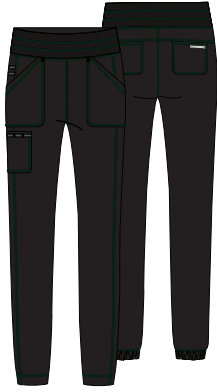
- Product Details**
- Modern Classic fit
  - Snap front closure
  - Welt chest pocket
  - Mesh side panels
  - Reflective label
  - Side vents

Available Colours

BLK

NAV

PWT



## WWE011 Natural Rise Jogger

XXS-3XL (73.5cm)

**Fabric**  
78 Poly/20 Rayon/  
2 Elastane Twill

**Fabric Weight**  
160gr

**Care**  
30°

### Product Details

- Modern Classic fit
- Mesh on elasticised waistband
- Five pockets: two front patch pockets, cargo pocket, two back patch pockets
- Instrument loops
- Stylised hem
- Reflective label and tape
- Tapered leg, 28cm opening

### Available Colours

BLK

NAV

PWT

## MEN'S ACTIVE



## WWE615 Men's Polo Shirt

XXS-3XL (72cm)

**Fabric**  
78 Poly/20 Rayon/  
2 Elastane Twill

**Fabric Weight**  
160gr

**Care**  
30°

### Product Details

- Men's Modern fit
- Chest pocket
- Mesh yoke and panels
- Locker loop
- Reflective label

### Available Colours

BLK

NAV

PWT



## WWE603 Men's V-Neck Top

XXS-3XL (72cm)

**Fabric**  
78 Poly/20 Rayon/  
2 Elastane Twill

**Fabric Weight**  
160gr

**Care**  
30°

### Product Details

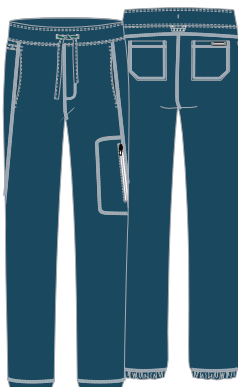
- Men's fit
- Chest pocket, zip front pocket
- Instrument loop above zip pocket
- Mesh yoke and panels
- Locker loop
- Reflective label and tape

### Available Colours

BLK

NAV

PWT



## WWE012 Men's Jogger

XXS-3XL (78.5cm)

**Fabric**  
78 Poly/20 Rayon/  
2 Elastane Twill

**Fabric Weight**  
160gr

**Care**  
30°

### Product Details

- Men's fit
- Elastic waistband with drawstring
- Five pockets: two front slash pockets, side seam zip pocket, two back pockets
- Instrument and locker loops
- Stylised hem
- Reflective label and tape
- Straight leg, 30cm opening

### Available Colours

BLK

NAV

PWT



COLOUR and  
STYLE MATRIX

Colours and styles listed in  
order of popularity.

Styles and colours featured  
are reorderable and Poly/  
Elastane Poplin, unless  
otherwise noted.

Centre back lengths and  
inseams are listed  
in parentheses.



**WWE601**  
V-Neck  
Top

XXS-3XL  
(66cm)



**WWE698**  
Snap Front  
Polo Shirt

XXS-3XL  
(70cm)



**WWE011**  
Natural  
Rise Jogger

XXS-3XL  
(73.5cm)



**WWE012**  
Jogger

XXS-3XL  
(78.5cm)



**WWE615**  
Polo  
Shirt

XXS-3XL  
(72cm)



**WWE603**  
V-Neck  
Top

XXS-3XL  
(72cm)

	WOMEN'S ACTIVE STYLES			MEN'S ACTIVE STYLES		
BLACK (BAPS)						
NAVY (NAV)						
PEWTER (PWT)						



Next-Level  
Softness

Slip into our softest,  
smoothest, most  
comfortable fabric ever.



ULTRA SOFT



TWO-WAY  
STRETCH



EASY  
CARE

Model is wearing: **WWE620** V-Neck  
Top in Caribbean Blue (CAR)





## WWE620 V-Neck Top

XXS-3XL (68.5cm)

**Fabric**  
78 Poly/20 Rayon/  
2 Elastane Twill

**Fabric Weight**  
160gr / 170gr

**Care**  
Industrial Launder  
70°

### Product Details

- Modern Classic fit
- Three pockets: patch pocket with instrument loop on left, double patch pocket on right
- Logo label with bungee loop
- Back princess seams
- Side vents

### Available Colours



## WWE610 Mock Wrap Top

XXS-3XL (66cm)

**Fabric**  
78 Poly/20 Rayon/  
2 Elastane Twill

**Fabric Weight**  
160gr / 170gr

**Care**  
Industrial Launder  
70°

### Product Details

- Modern Classic fit
- Two patch pockets
- Hidden instrument loops
- Logo label with bungee loop
- Front and back princess seams
- Front shoulder yokes
- Side vents

### Available Colours



## MATERNITY STYLES



## WWE688 Maternity Mock Wrap Top

XXS-3XL (68.5cm)

**Fabric**  
78 Poly/20 Rayon/  
2 Elastane Twill  
60 degree wash

**Fabric Weight**  
160gr

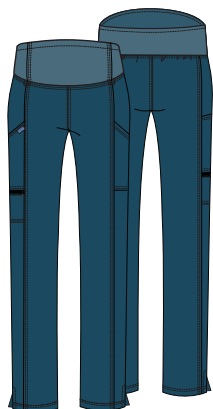
**Care**  
60°

### Product Details

- Maternity fit
- Two patch pockets
- Front shoulder yokes
- Front and back princess seams
- Soft knit front panels
- Side zip gussets with mesh insets allow room to grow

*Please order your pre-pregnancy size.*

### Available Colours



## WWE155 Maternity Pull-on Trouser

XXS-3XL (76cm)

**Fabric**  
78 Poly/20 Rayon/  
2 Elastane Twill

**Fabric Weight**  
160gr

**Care**  
60°

### Product Details

- Maternity fit
- Soft knit waistband
- Three pockets: two cargo pockets, zip pocket on right
- Bungee loops at waist
- Side vents
- Slim-straight leg, 38cm opening

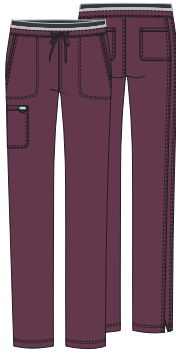
*Please order your pre-pregnancy size.*

### Available Colours





## WOMEN'S TROUSERS



### WWE105

#### Mid Rise Drawstring Cargo Trousers

XXS-3XL (78.5cm)

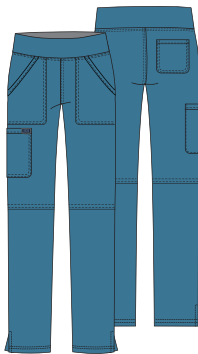
**Fabric**  
78 Poly/20 Rayon/  
2 Elastane Twill

**Fabric Weight**  
160gr / 170gr

**Care**  
Industrial Launder  
70°

**Product Details**

- Modern Classic fit
- Five pockets: slash pockets, cargo pocket, back pockets
- Elastic knit waistband
- Logo label with bungee loop
- Tapered leg, 38cm opening

**Available Colours**

### WWE110

#### Mid Rise Pull-on Cargo Trousers

XXS-3XL (78.5cm)

**Fabric**  
78 Poly/20 Rayon/  
2 Elastane Twill

**Fabric Weight**  
160gr / 170gr

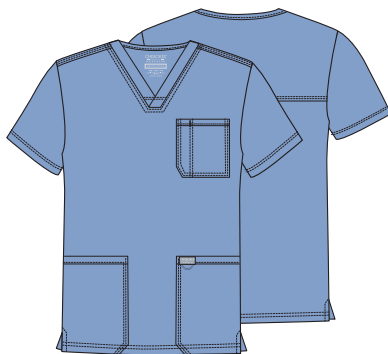
**Care**  
Industrial Launder  
70°

**Product Details**

- Modern Classic fit
- Elastic-reinforced knit waistband
- Four pockets: front patch pockets, cargo pocket and back pocket
- Logo label with bungee loop
- Side vents
- Straight leg, 45.5cm opening

**Available Colours**

## MEN'S STYLES



### WWE670

#### Men's V-Neck Top

XXS-3XL (73.5cm)

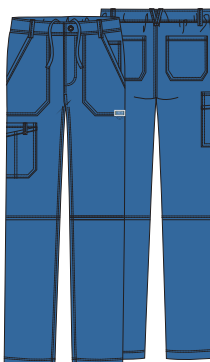
**Fabric**  
78 Poly/20 Rayon/  
2 Elastane Twill

**Fabric Weight**  
160gr / 170gr

**Care**  
Industrial Launder  
70°

**Product Details**

- Men's fit
- Chest pocket with pencil stitch
- Two patch pockets
- Logo label with bungee loop
- Back yoke
- Side vents

**Available Colours**

### WWE140

#### Men's Fly Front Cargo Trousers

XXS-3XL (81cm)

**Fabric**  
78 Poly/20 Rayon/  
2 Elastane Twill

**Fabric Weight**  
160gr / 170gr

**Care**  
Industrial Launder  
70°

**Product Details**

- Men's fit
- Back elastic waistband with inside drawstring
- Zip fly with button closure
- Five belt loops
- Seven pockets: double cargo pocket, patch pockets, back pockets, accessory pocket
- Logo label with bungee loop
- Tapered leg, 48cm opening





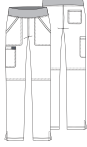
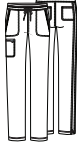

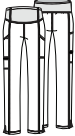
**Available Colours**

COLOUR and  
STYLE MATRIX

Colours and styles listed  
in order of popularity.

Styles and colours featured  
are reorderable and Poly/  
Rayon/Elastane Twill, unless  
otherwise noted.

Centre back lengths and inseams  
are listed in parentheses.

							
<b>WWE140</b> Fly Front Cargo Trouser	<b>WWE670</b> V-Neck Top	<b>WWE610</b> Mock Wrap Top	<b>WWEW620</b> V-Neck Top	<b>WWE110</b> Mid Rise Pull-on Cargo Trouser	<b>WWE105</b> Mid Rise Drawstring Cargo Trouser	<b>WWE688</b> Maternity Mock Wrap Top	<b>WWE155</b> Maternity Pull-on Trouser
XXS-3XL (81cm)	XXS-3XL (73.5cm)	XXS-3XL (66cm)	XXS-3XL (68.5cm)	XXS-3XL (78.5cm)	XXS-3XL (78.5cm)	XXS-3XL (68.5cm)	XXS-3XL (76cm)

	MEN'S STYLES		WOMEN'S STYLES				MATERNITY	
Black (BLK)								
Navy (NAV)								
Pewter (PWT)								
Royal (ROY)						style not available in this colour	style not available in this colour	style not available in this colour
Wine (WIN)	style not available in this colour	style not available in this colour					style not available in this colour	style not available in this colour
Caribbean Blue (CAR)							style not available in this colour	style not available in this colour
Ciel Blue (CIE)						style not available in this colour	style not available in this colour	style not available in this colour
Teal Blue (TLB)	style not available in this colour	style not available in this colour		style not available in this colour		style not available in this colour	style not available in this colour	style not available in this colour
Hunter (HUN)	style not available in this colour	style not available in this colour	style not available in this colour	style not available in this colour	style not available in this colour	style not available in this colour	style not available in this colour	style not available in this colour
White (WHT)							style not available in this colour	style not available in this colour
Eggplant (EGG)	style not available in this colour	style not available in this colour	style not available in this colour	style not available in this colour	style not available in this colour	style not available in this colour	style not available in this colour	style not available in this colour
Electric Pink (EPI)	style not available in this colour	style not available in this colour		style not available in this colour		style not available in this colour	style not available in this colour	style not available in this colour
Turquoise (TRQ)	style not available in this colour	style not available in this colour		style not available in this colour		style not available in this colour	style not available in this colour	style not available in this colour



## Fresh Looks All Shift Long

Our most popular scrubs,  
enhanced with spill- and  
stain-resistant Certainty<sup>®</sup>  
Protective Technologies.™



ULTRA  
SOFT



CERTAINTY<sup>®</sup>  
TECHNOLOGIES



TWO-WAY  
STRETCH



WWE507AB  
Scrub Hat



### WWE770AB V-Neck Top

XXS-3XL (66cm)

**Fabric**  
78 Poly/20 Rayon/  
2 Elastane Twill

**Fabric Weight**  
160gr / 170gr

**Care**  
60°

#### Product Details

- Modern Classic fit
- Rib-knit at neckline
- Three pockets: two patch pockets, utility pocket with pen slot on right
- Rib-knit back side panels
- Side vents

#### Available Colours



### WWE775AB Mock Wrap Top

XXS-3XL (66cm)

**Fabric**  
78 Poly/20 Rayon/  
2 Elastane Twill

**Fabric Weight**  
160gr

**Care**  
60°

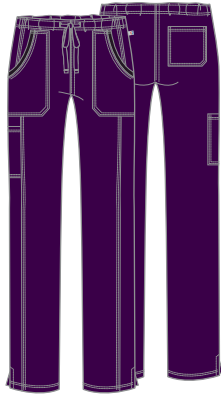
#### Product Details

- Modern Classic fit
- Two patch pockets
- Instrument loops, pen slot
- Rib-knit back panels
- Side vents

#### Available Colours



For extra protection, Certainty<sup>®</sup> antimicrobial and fluid-barrier fabric technologies have been added to all Revolution Tech garments.  
Visit [CertaintyTechnologies.com](http://CertaintyTechnologies.com) for details.



## WWE235AB Mid Rise Drawstring Trouser

XXS-3XL (78.5cm)

**Fabric**  
78 Poly/20 Rayon/  
2 Elastane Twill

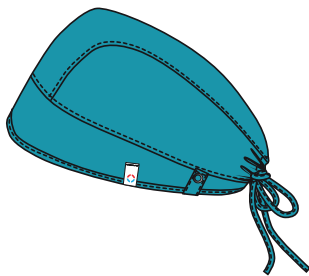
**Fabric Weight**  
160gr / 170gr

**Care**  
60°

### Product Details

- Modern Classic fit
- Four pockets: patch pockets, cargo pocket, back pocket
- Rib-knit trim at pockets
- Side vents
- Straight leg, 42.5cm opening

### Available Colours



## WWE507AB Scrubs Hat

OS

**Fabric**  
78 Poly/20 Rayon/  
2 Elastane Twill

**Fabric Weight**  
160gr

**Care**  
60°

### Product Details

- Unisex fit
- Snap tabs by ears to hold face mask in place
- Contoured seaming
- Interior terry-cloth sweat and
- Back elastic and adjustable tie for secure fit

### Available Colours



## COLOUR and STYLE MATRIX

Colours and styles listed  
in order of popularity.

Styles and colours  
featured are reorderable and  
Poly/Rayon/Elastane Twill.

Centre back lengths and inseams  
are listed in parentheses.



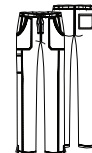
WWE770AB  
V-Neck  
Top

XXS-3XL (66cm)



WWE775AB  
Mock Wrap  
Top

XXS-3XL (66cm)



WWE235AB/P/T  
Mid Rise  
Drawstring Trousers

XXS-3XL (78.5cm)



WWE507AB  
Scrubs Hat

OS

	WOMEN'S STYLES			UNISEX STYLE
Black (BLK)				
Navy (NAV)				
Pewter (PWT)				
White (WHT)				style not available in this colour
Royal (ROY)				
Ciel Blue (CIE)				
Wine (WIN)				
Teal Blue (TLB)	style not available in this colour	style not available in this colour	style not available in this colour	



## Stretch Your Comfort Zone

Soft, sportswear-inspired fabric that stretches two ways for flattering fit and comfort at every move.



DURABLE



EXTRA SOFT



TWO-WAY STRETCH



Model is wearing: **WWE4727**  
V-Neck Top in Ciel Blue (CIEW)

### WOMEN'S STYLES



#### WWE4727 V-Neck Top

XXS-3XL (68.5cm)

**Fabric**  
55 Cotton/42 Poly/  
3 Elastane Twill

**Fabric Weight**  
155gr / 170gr

**Care**  
60°

#### Product Details

- Modern Classic fit
- Crossover front yoke
- Two patch pockets
- Right sectional pocket with ID loop
- Back yoke and princess seams
- Side vents

#### Available Colours



#### WWE4728 Mock Wrap Top

XXS-3XL (68.5cm)

**Fabric**  
55 Cotton/42 Poly/  
3 Elastane Twill

**Fabric Weight**  
155gr / 170gr

**Care**  
60°

#### Product Details

- Modern Classic fit
- Two patch pockets
- Right sectional pocket with ID loop
- Instrument loops
- Front and back princess seams
- Double-needle topstitching
- Side vents

#### Available Colours





**WWE4710**  
**V-Neck Top**  
XXS-3XL (66cm)

**Fabric**  
55 Cotton/42 Poly/  
3 Elastane Twill

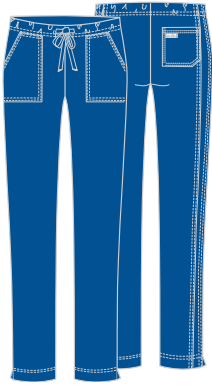
**Fabric Weight**  
155gr / 170gr

**Care**  
60°

**Product Details**

- Modern Classic fit
- Two patch pockets
- Interior and back pockets
- Front shoulder yokes with ID badge slot
- Stethoscope loop and pen slot
- Princess seams
- Double-needle topstitching
- Side vents

**Available Colours**



**WWE4203**  
**Mid Rise Drawstring Trousers**  
XXS-3XL (78.5cm)

**Fabric**  
55 Cotton/42 Poly/  
3 Elastane Twill

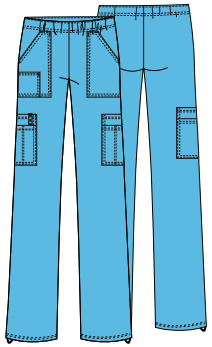
**Fabric Weight**  
155gr / 170gr

**Care**  
60°

**Product Details**

- Modern Classic fit
- Elastic waistband with drawstring
- Patch pockets, back pocket
- Slim straight leg, 40.5cm opening

**Available Colours**



**WWE4005**  
**Mid Rise Pull-on Cargo Trousers**  
XXS-3XL (78.5cm)

**Fabric**  
55 Cotton/42 Poly/  
3 Elastane Twill

**Fabric Weight**  
155gr / 170gr

**Care**  
60°

**Product Details**

- Modern Classic fit
- Elastic waistband
- Seven pockets: front patch pockets, small right patch pocket, double cargo pockets
- ID loop on right cargo pocket
- Adjustable bungee at leg opening
- Straight leg, 49.5cm opening

**Available Colours**



**UNISEX STYLES**



**WWE4725**  
**Unisex V-Neck Top**  
XXS-3XL (71cm)

**Fabric**  
55 Cotton/42 Poly/  
3 Elastane Twill

**Fabric Weight**  
155 gr / 170gr

**Care**  
60°

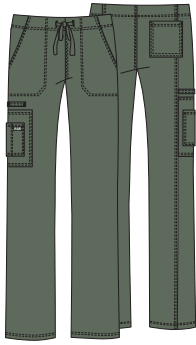
**Product Details**

- Unisex fit
- Chest pocket with instrument holder
- Two patch pockets
- Cellphone/instrument pocket
- Back yoke
- Side vents

**Available Colours**





**WWE4043****Unisex Drawstring Cargo Trouser****XXS-3XL (78.5cm)****Fabric**55 Cotton/42 Poly/  
3 Elastane Twill**Fabric Weight**

155 gr / 170gr

**Care****Product Details**

- Unisex fit
- Elastic waistband with drawstring
- Five pockets: slash pockets, cargo pocket, cellphone pocket, back pocket
- Instrument loops
- Straight leg, 52.0cm opening

**Available Colours**

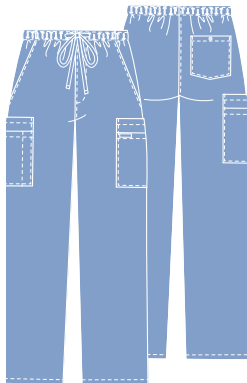
## MEN'S STYLES

**WWE4743****Men's V-Neck Top****XXS-3XL (73.5cm)****Fabric**55 Cotton/42 Poly/  
3 Elastane Twill**Fabric Weight**

155gr

**Care****Product Details**

- Men's fit
- Double chest pocket with pen slot
- Back yoke
- Double-needle topstitching
- Side vents

**Available Colours****WWE4243****Men's Fly Front Cargo Trouser****XXS-3XL (78.5cm)****Fabric**55 Cotton/42 Poly/  
3 Elastane Twill**Fabric Weight**

155 gr / 170gr

**Care****Product Details**

- Men's fit
- Elastic waistband with drawstring
- Zip fly front closure
- Seven pockets: slash pockets, double cargo pockets, back pocket with button closure
- Tapered leg, 45.5cm opening




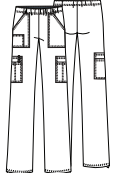
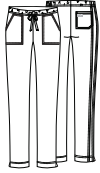
**Available Colours**

### COLOUR and STYLE MATRIX

Colours and styles listed in order of popularity.

Styles and colours featured are reorderable unless otherwise noted and are Cotton/Poly/Elastane Twill.

Centre back lengths and inseams are listed in parentheses.

				
<b>WWE4728</b> Mock Wrap Top	<b>WWE4710</b> V-Neck Top	<b>WWE4727</b> V-Neck Top	<b>WWE4005</b> Mid Rise Pull-on Cargo Trousers	<b>WWE4203</b> Mid Rise Drawstring Trousers
XXS-3XL (68.5cm)	XXS-3XL (66cm)	XXS-3XL (68.5cm)	XXS-3XL (78.5cm)	XXS-3XL (78.5cm)

	WOMEN'S TOPS			WOMEN'S TROUSERS	
Black ( <b>BLKW</b> )					
Navy ( <b>NAVW</b> )					
Pewter ( <b>PWTW</b> )					
Ciel ( <b>CIEW</b> )					
Royal ( <b>ROYW</b> )					
Wine ( <b>WINW</b> )					
Caribbean Blue ( <b>CARW</b> )					
White ( <b>WHTW</b> )					
Teal Blue ( <b>TLBW</b> )					
Hunter ( <b>HUNW</b> )					
Turquoise ( <b>TRQW</b> )		style not available in this colour	style not available in this colour		style not available in this colour
Shocking Pink ( <b>SHPW</b> )		style not available in this colour	style not available in this colour		style not available in this colour

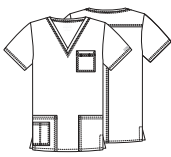


COLOUR and  
STYLE MATRIX

Colours and styles listed in order of popularity.

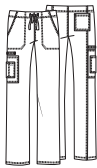
Styles and colours featured are reorderable unless otherwise noted and are Cotton/Poly/Elastane Twill.

Centre back lengths and inseams are listed in parentheses.



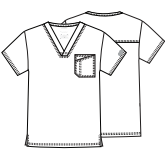
WWE4725  
V-Neck  
Top

XXS-3XL  
(71cm)



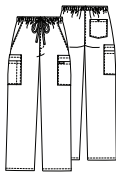
WWE4043  
Drawstring  
Cargo Trouser

XXS-3XL  
(78.5cm)



WWE4743  
V-Neck  
Top

XXS-3XL  
(73.5cm)



WWE4243  
Fly Front Cargo  
Trouser

XXS-3XL  
(78.5cm)

	UNISEX STYLES		MEN'S STYLES	
Black (BLKW)				
Navy (NAVW)				
Pewter (PWTW)				
Ciel (CIEW)			style not available in this colour	
Royal (ROYW)			style not available in this colour	
Wine (WINW)			style not available in this colour	style not available in this colour
Caribbean Blue (CARW)				
White (WHTW)			style not available in this colour	
Teal Blue (TLBW)			style not available in this colour	style not available in this colour
Hunter (HUNW)			style not available in this colour	style not available in this colour





## Moving Forward

Infinity innovates with brand-new styles, including a scrubs cardigan, and great new options for Women and Men.



FOUR-WAY STRETCH



CERTAINTY® TECHNOLOGIES



MOISTURE WICKING

For extra protection, Certainty® antimicrobial fabric technology has been added to all Infinity garments. Wash all items thoroughly after each use. Items featuring antimicrobial technology do not protect users or others against bacteria, viruses, or disease organisms. Always follow all best practices for infection prevention. Visit [CertaintyTechnologies.com](http://CertaintyTechnologies.com) for details.



Model is wearing: **CKE2625A**  
Mock Wrap Top in Teal Blue (TLPS)



## WOMEN'S TOPS



### CKE2625A Mock Wrap Top

XXS-3XL (66cm)

**Fabric**  
95 Poly/  
5 Elastane Poplin

**Fabric Weight**  
175gr

**Care**  
60°

#### Product Details

- Contemporary fit
- Four pockets: interior pocket, instrument pocket, and set-in front pockets
- Logo O-ring
- Princess seams
- Rib-knit back panel
- Side vents

#### Available Colours



### CKE2624A Round Neck Top

XXS-3XL (66cm)

**Fabric**  
95 Poly/  
5 Elastane Poplin

**Fabric Weight**  
175gr

**Care**  
60°

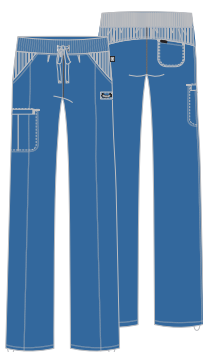
#### Product Details

- Contemporary fit
- Three pockets: two patch pockets, interior pocket
- Rib-knit inset at front neckband and back panel
- Shoulder yokes
- Bungee ID badge loop
- Side vents

#### Available Colours



## WOMEN'S TROUSERS



### CKE1123A Drawstring Trouser

XXS-3XL (78.5cm)

**Fabric**  
95 Poly/  
5 Elastane Poplin

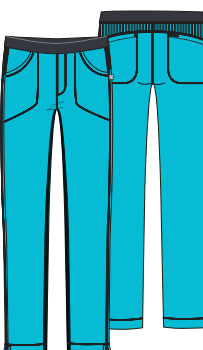
**Fabric Weight**  
175gr

**Care**  
60°

#### Product Details

- Contemporary fit
- Four pockets: slash pockets, cargo pocket, back pocket
- Elastic-reinforced rib-knit waistband with drawstring
- Adjustable toggle hems
- Rib-knit front and back yokes
- Straight leg, 45.5cm opening

#### Available Colours



### CKE1124A Slim Pull-on Trouser

XXS-3XL (78.5cm)

**Fabric**  
95 Poly/  
5 Elastane Poplin

**Fabric Weight**  
175gr

**Care**  
60°

#### Product Details

- Contemporary fit
- Lower rise
- Patch and back pockets
- Elastic waistband
- Rib-knit back yoke and in-seam inset
- Coverstitch detail
- Side vents
- Slim straight leg, 43cm opening

#### Available Colours







Model is wearing: **CKE900A**  
Men's V-Neck top in  
Wine (WNPS)

## MEN'S STYLES



### **CKE900A** Men's V-Neck Top

**XXS-3XL (75cm)**

**Fabric**  
95 Poly/  
5 Elastane Poplin Knit

**Fabric Weight**  
175gr

**Care**  
60°

#### Product Details

- Men's fit
- Three pockets: welt pockets, chest pocket with grommet detail
- Rib-knit back side panels
- Front and back yokes

#### Available Colours

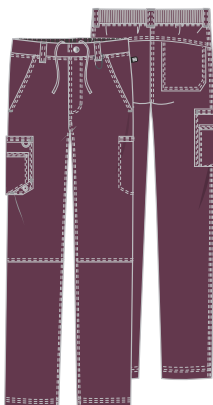
BAPS

CAPS

NYPS

PWPS

WNPS



### **CKE200A** Men's Fly Front Cargo Trouser

**XXS-3XL (81cm)**

**Fabric**  
95 Poly/  
5 Elastane Poplin

**Fabric Weight**  
175gr

**Care**  
60°

#### Product Details

- Men's fit
- Back rib-knit elastic waistband
- Zip fly with button closure and inside drawstring
- Six pockets: front slash pockets, welt cargo pocket on left, layered cargo pocket with bungee and grommet on right, back patch pocket
- Knee seams
- Five belt loops
- Tapered leg, 45.5cm opening

#### Available Colours

BAPS

CAPS

NYPS

PWPS






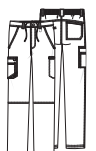
WNPS

## COLOUR and STYLE MATRIX

Colours and styles listed in  
order of popularity.

Styles and colours featured  
are reorderable and Poly/  
Elastane Poplin, unless  
otherwise noted.

Centre back lengths and  
inseams are listed  
in parentheses.

					
<b>CKE2624A</b> Round Neck Top	<b>CKE2625A</b> Mock Wrap Top	<b>CKE1123A</b> Drawstring Trousers	<b>CKE1124A</b> Slim Pull-on Trousers	<b>CKE900A</b> V-Neck Top	<b>CKE200A</b> Fly Front Cargo Trousers
XXS-3XL (66cm)	XXS-3XL (66cm)	XXS-3XL (78.5cm)	XXS-3XL (78.5cm)	XXS-3XL (75cm)	XXS-3XL (81cm)

	WOMEN'S TOPS		WOMEN'S TROUSERS		MEN'S STYLES	
Black (BAPS)						
Navy (NYPS)						
Pewter (PWPS)						
Royal (RYPS)					style not available in this colour	style not available in this colour
White (WTPS)					style not available in this colour	style not available in this colour
Wine (WNPS)						
Caribbean Blue (CAPS)						
Ciel (CIPS)	style not available in this colour				style not available in this colour	style not available in this colour
Teal Blue (TLPS)					style not available in this colour	style not available in this colour
Carmine Pink (CPPS)	style not available in this colour		style not available in this colour		style not available in this colour	style not available in this colour
Turquoise (TRQ)	style not available in this colour		style not available in this colour		style not available in this colour	style not available in this colour



For extra protection, Certainty® antimicrobial fabric technology has been added to all Infinity garments. Visit [CertaintyTechnologies.com](https://www.CertaintyTechnologies.com) for details.



**CKE452**  
**Women's 83.5cm Lab Coat**

XXS-3XL (83.5cm)

**Fabric**

65 Poly/35 Cotton  
Built-in Stretch Twill

**Care**



**Fabric Weight**

166gr

**Product Details**

- Modern Classic fit
- Three pockets: chest pocket with instrument loop, two front tablet pockets
- Front and back princess seams
- Back shoulder yokes
- Locker loop

**Available Colour**

WHT



Model is wearing: **CKE452**  
Women's 83.82 Lab Coat  
in White (WHT)

WOMEN'S STYLES



**CKE451**  
**Women's 71cm Lab Coat**

XXS-3XL (71cm)

**Fabric**

65 Poly/35 Cotton  
Built-in Stretch Twill

**Fabric Weight**

166gr

**Care**



**Product Details**

- Modern Classic fit
- Three pockets: chest pocket, two front tablet pockets
- Back princess seams

**Available Colour**

WHT



**CKE421**  
**Women's 94cm Lab Coat**

XXS-3XL (94cm)

**Fabric**

65 Poly/35 Cotton  
Built-in Stretch Twill

**Fabric Weight**

166gr

**Care**



**Product Details**

- Modern Classic fit
- Three pockets: chest pocket, two front tablet pockets
- Side access slits
- Front and back yokes
- Bungee ID badge loop
- Back princess seams
- Locker loop

**Available Colour**

WHT



## MEN'S STYLES


**CKE401**  
**Men's 72cm Lab Coat**

XXS-3XL (76cm)

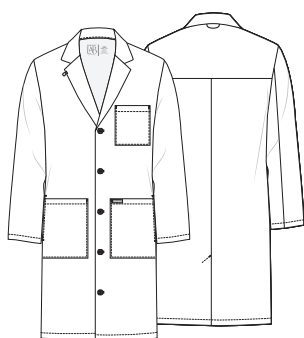
**Fabric**  
 65 Poly/35 Cotton  
 Built-in Stretch Twill

**Fabric Weight**  
 166gr
**Product Details**

- Men's fit
- Three pockets: chest pocket, two front tablet pockets
- Back yoke and center back seam

**Available Colour**

WHT


**CKE412**  
**Men's 96.5cm Lab Coat**

XXS-3XL (96.5cm)

**Fabric**  
 65 Poly/35 Cotton  
 Built-in Stretch Twill

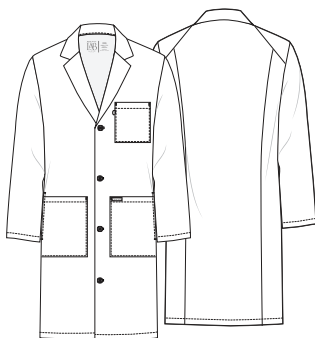
**Fabric Weight**  
 166gr
**Product Details**

- Men's fit
- Three pockets: chest pocket, two front tablet pockets
- Side access slits
- Bungee ID badge loop
- Locker loop
- Back yoke
- Back kick pleat

**Available Colour**

WHT

## UNISEX STYLES


**CKE460**  
**Unisex 96.5cm Lab Coat**

XXS-3XL (96.5cm)

**Fabric**  
 65 Poly/35 Cotton  
 Built-in Stretch Twill

**Fabric Weight**  
 166gr
**Product Details**

- Unisex fit
- Three pockets: chest pocket, two front tablet pockets
- Side access slits
- Bungee ID badge loop

**Available Colour**

WHT

**COLOUR and STYLE MATRIX**

Styles and colours featured are reorderable and Poly/Cotton Built-in Stretch Twill.

Centre back lengths are listed in parentheses.


**CKE451**  
 Lab Coat

XXS-3XL (71cm)


**CKE452**  
 Lab Coat

XXS-3XL (83.5cm)


**CKE421**  
 Lab Coat

XXS-3XL (94cm)


**CKE401**  
 Lab Coat

XXS-3XL (76cm)


**CKE412**  
 Lab Coat

XXS-3XL (96.5cm)


**CKE460**  
 Lab Coat

XXS-3XL (96.5cm)

## WOMEN'S STYLES

## MEN'S STYLES

## UNISEX

White (WHT)



**WWE4439**  
**Women's 83.5cm Lab Coat**

**XS-3XL (83.5cm)**

**Fabric**  
51 Poly/46 Rayon/  
3 Elastane Twill

**Fabric Weight**  
170gr

**Care**  
30°

**Product Details**

- Modern classic fit
- Patch pockets
- Button front closure
- Heat transfer logo
- Instrument loop

**Available Colour**

WHTV



**WWE4403**  
**96.5cm Unisex Lab Coat**

**XS-3XL (96.5cm)**

**Fabric**  
51 Poly/46 Rayon/  
3 Elastane Twill

**Fabric Weight**  
170gr

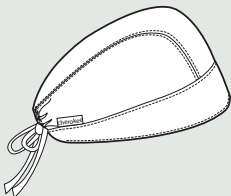
**Care**  
30°

**Product Details**

- Unisex modern fit
- Three pockets: patch pockets, chest pocket
- Button front closure
- Side access slits
- Heat transfer logo

**Available Colour**

WHTV



**CKE2506**  
**Solid Scrubs Hat**

**OS**

**Fabric**  
65 Poly/35 Cotton  
Poplin w/Soil  
Release

**Fabric Weight**  
153gr

**Care**  
60°

**Product Details**

- Unisex fit
- Contoured seaming
- Interior terry cloth sweatband
- Back elastic and adjustable tie

**Available Colours**

Black (BLKW) Navy (NAVW) Powder (PWTW)  
Royal (ROYW) Wine (WINW) Shocking Pink (SHPW)



# FIT GUIDES

## WOMEN'S MEASURING GUIDE



BUST

WAIST

HIPS

INSEAM

Measure under the arms around the fullest part of the bust/chest.

Measure under the natural waistline, loosely holding the tape measure.

Standing with feet together, measure around the fullest part of the hips.

Measure along the inside of the leg, from just below the crotch to 1" below the ankle.

## MEN'S MEASURING GUIDE



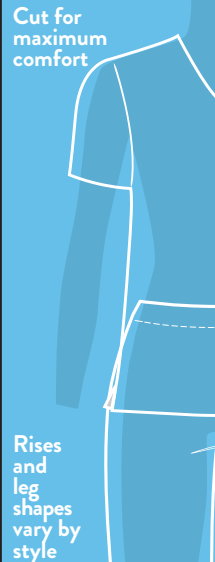
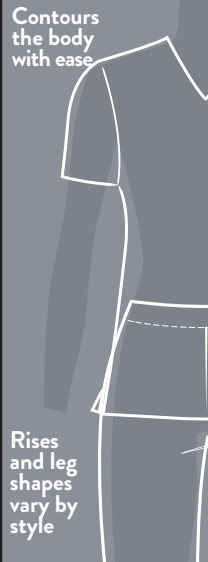

CHEST

WAIST

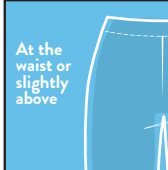
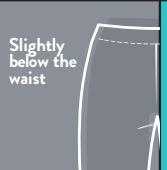

HIPS

INSEAM


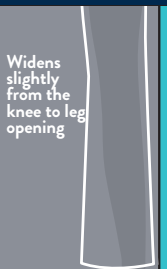

## WOMEN'S FIT GUIDE

TRADITIONAL CLASSIC FIT	MODERN CLASSIC FIT	CONTEMPORARY FIT
Cut for maximum comfort	Contours the body with ease	Contoured to your curves
		
Rises and leg shapes vary by style	Rises and leg shapes vary by style	Rises and leg shapes vary by style

## TROUSER WAIST FIT GUIDE

NATURAL	MID RISE	LOW RISE
At the waist or slightly above	Slightly below the waist	Below the waist
		

## TROUSER LEG FIT GUIDE

STRAIGHT	MODERATE FLARE BOOT CUT	FLARE
Falls straight from the knee to leg opening	Widens slightly from the knee to leg opening	Flares from the knee to leg opening
		



## FIT GUIDES

**All measurements are in centimetres.**

Use this chart to determine your size. If one of your measurements is between two sizes, order the smaller size for a tighter fit or the larger size for a looser fit. If your measurements for hips and waist correspond to two different suggested sizes, order the one indicated by your hip measurement. All measurements are in centimeters.

## Women's Traditional Classic Fit/Maternity Fit

[illegible]

## Women's Modern Classic Fit

	XXS	XS	S	M	L	XL	2XL	3XL
	0	2-4	6-8	10-12	14-16	18-20	22-24	26-28
Bust	84-86.5	89-91.5	94-96.5	99-104	107-112	114.5-119.5	122-129.5	132-140
Waist	63.5-66	68.5-71	74-76	79-84	86.5-91.5	94-99	101.5-109	112-119.5

## Women's Contemporary Fit

	XXS	XS	S	M	L	XL	2XL	3XL
	0	2-4	6-8	10-12	14-16	18-20	22-24	26-28
Bust	81.5-84	86.5-89	91.5-94	96.5-101.5	104-109	112-117	119-127	129.5-137
Waist	61-63.5	66-68.5	71-73.5	76-81.5	84-91.5	94-99	101.5-109	112-119.5

## MEN'S FIT GUIDE

## Men's Traditional Fit

The diagram is split into two vertical panels. The left panel has a teal background and shows a 'Classic Fit' t-shirt silhouette. It is described as having a 'Relaxed fit for ultimate comfort' and a 'Wider leg with a touch of extra room'. The right panel has a blue background and shows an 'Athletic Fit' t-shirt silhouette. It is described as being 'Tapered from the chest' and having a 'Tapered cut for a sleek silhouette'. Both shirts are white with a V-neckline and short sleeves.

**CLASSIC FIT**

Relaxed fit for ultimate comfort

Wider leg with a touch of extra room

**ATHLETIC FIT**

Tapered from the chest

Tapered cut for a sleek silhouette

	XS	S	M	L	XL	2XL	3XL
Chest	89-98	96.5-105.5	104-109	112-119	122-129.5	132-140	142-150
Waist	71-76	78.5-84	86.5-91.5	94-101.5	104-112	114.5-122	124.5-132
Hips	86.5-91.5	94-99	101.5-107	109-117	119.5-127	129.5-137	140-147.5
Inseam	Regular: 76-79						

## Men's Modern Fit

	XS	S	M	L	XL	2XL	3XL
<b>Chest</b>	84-89	91.5-96.5	99-104	107-114.5	117-124.5	127-134.5	137-145
<b>Waist</b>	66-71	74-79	81.5-86.5	89-96.5	99-104	107-114.5	117-124.5
<b>Hips</b>	81.5-86.5	89-94	96.5-101.5	104-112	114.5-122	124.5-132	134.5-142
<b>Inseam</b>	<b>Regular: 76-79</b>						

## Unisex Traditional Fit

[illegible]

## Unisex Modern Fit

[illegible]

STYLE #	PAGE(S)	STYLE #	PAGE(S)	STYLE #	PAGE(S)
CKE1123A	23	WWE140	13	WWE4743	19
CKE1124A	23	WWE155	12	WWE4770	6
CKE200A	25	WWE235AB	16	WWE4777	7
CKE2506	28	WWE4005	18	WWE4801	6
CKE2624A	23	WWE4043	19	WWE4876	7
CKE2625A	22,23	WWE4100	7	WWE770AB	15
CKE401	27	WWE4200	6	WWE530C	7
CKE412	27	WWE4203	18	WWE601	9
CKE421	26	WWE4243	19	WWE603	10
CKE451	26	WWE4403	28	WWE610	12
CKE452	26	WWE4439	28	WWE615	9,10
CKE460	27	WWE4700	5, 6	WWE620	11,12
CKE900A	24,25	WWE4710	18	WWE670	13
WWE011	10	WWE4725	18	WWE688	12
WWE012	10	WWE4727	17	WWE698	9
WWE105	13	WWE4728	17	WWE507AB	15,16
WWE110	13	WWE4737	17	WWE775AB	15



### Certainty Protective Technologies™

Certainty Protective Technologies™ are integrated into many of our products to help them better withstand the demands of the clinical environment. Each Certainty® technology adds one or more levels of enhanced protection to increase durability, improve comfort and/or protect the item against fluids and/or bacteria. Items with Certainty® carry the Certainty logo along with a letter symbol indicating the type(s) of Certainty® protection it offers.

#### Antimicrobial Agents

Proven to reduce bacteria that cause odors and damage the item.

#### Fluid Barrier

Fluids and stains bead up and roll off the item.

and letter designation indicates garments with one or more Certainty Protective Technologies™ (A = Antimicrobial and B = Fluid Barrier). Wash all garments thoroughly after each use. Garments featuring antimicrobial technology do not protect users or others against bacteria, viruses or other disease organisms. Always follow all best practices for infection prevention.



Inhibits the growth of microbes that cause odor and fabric damage.



Instead of soaking through, fluids bead up and roll off the fabric.

# COLOUR ABBREVIATIONS

COLOUR NAME	COLOUR	ABBREVIATION(S)
Black		BAPS, BLK, BLKW
Caribbean (Blue)		CAPS, CAR, CARW
Carmine Pink		CPPS
Ciel (Blue)		CIE, CIEW, CIPS
Electric Pink		EEPI
Eggplant		EGG, EGGW
Galaxy Blue		GABW
Grape		GRPW
Grey		GRYW
Hunter (Green)		HUN, HUNW
Khaki		KAKW
Navy		NAV, NAVW, NYPS
Pewter		PWPS, PWT, PWTW
Red		REDW
Royal		ROY, ROYW, RYPS
Shocking Pink		SHPW
Surgical Green		SGRW
Teal (Blue)		TLB, TLBW, TLPS
Turquoise		TRQ, TRQW
White		WHT, WHTW, WHTV, WTPS
Wine		WIN, WINW, WNPS





**Careismatic.com**

## **INFORMATION**

### **ONLINE ORDERING**

[cbicentral.com](http://cbicentral.com)

### **CUSTOMER CARE**

+44 7444658730

Monday – Friday 9am to 5pm GMT/BST

Email: [customerserviceeurope@careismatic.com](mailto:customerserviceeurope@careismatic.com)

For Terms and Conditions please visit: [cbicentral.com](http://cbicentral.com)

CAREISMATIC BRANDS  
NL B.V. Apollolaan 151,  
1077AR Amsterdam, Netherlands

[CherokeeUniforms.com](https://CherokeeUniforms.com)



[@cherokeeuniforms](https://www.instagram.com/cherokeeuniforms)

8040/JAN22